



# guest

PROGRAM BROCHURE



Southern  
Legislative  
Conference



**saturday**

**07.11.2026**

**Guest Lounge**

**12:00 PM – 5:00 PM**

The Guest Lounge is open daily and provides a relaxing spot to grab refreshments and take a load off.

# sunday

**07.12.2026**

**8:00 AM – 5:00 PM**

## **Guest Lounge**

The Guest Lounge is open daily and provides a relaxing spot to grab refreshments and take a load off.

**8:00 AM – 1:00 PM** *(includes travel time)*

## **Fun Float on Elkhorn Creek**

Glide through a secluded, wildlife-rich section of Elkhorn Creek on the Fun Float, a scenic canoe and kayak adventure perfect for nature lovers and outdoor enthusiasts. Drift past rock-bottom riffles, calm pools, and wooded valleys while enjoying the beauty of Kentucky's waterways. Guests should bring clothing that can get wet, a change of clothes, sunscreen, hats, and sunglasses. A signed waiver is required for all participants.



**8:15 AM – 12:30 PM** *(includes travel time)*

## **Raven Run Nature Sanctuary Hike**

Explore 734 acres of trails, meadows, woodlands, and streams at this sanctuary just outside Lexington. The park borders the Kentucky River, offers ten miles of hiking paths, and features historic remnants from early 19th-century settlers; trails are narrow in some areas.

**7:30 AM – 1:00 PM** *(includes travel time)*

## **Mega Cavern Underground Glow Zip Line Experience**

Experience the world's only fully underground zip line course at Louisville Mega Cavern, reimagined with a glow-in-the-dark twist. This guided adventure sends riders soaring through illuminated caverns filled with color, light and music, creating a high-energy journey beneath the city. Participants must weigh between 55 and 280 pounds, wear closed-toe shoes, and dress comfortably for underground temperatures ranging from 58 to 60 degrees.

**8:00 AM – 1:30 PM** *(includes travel time)*

## **Mega Cavern Underground Glow Zip Line Experience**

See description listed at 7:30 AM.

**9:50 AM – 12:00 PM** *(includes travel time)*

## **Lane's End Farm Thoroughbred Experience**

Visit Lane's End Farm, a premier Thoroughbred operation spanning more than 2,300 acres in Central Kentucky. Learn about its breeding and sales legacy—home to legendary stallions and champion broodmares—and its long-standing impact on the global Thoroughbred industry and Kentucky horse country.



**10:00 AM – 1:00 PM** *(includes travel time)*

## **Pickleball at North YMCA**

Experience pickleball, an easy-to-learn sport that offers movement, strategy, and friendly competition. Morning play takes place at the North YMCA, with flexibility to move indoors as weather requires.

**10:00 AM – 1:30 PM** *(includes travel time)*

## **Castle & Key Distillery Guided Tour and Tasting**

Explore Castle & Key Distillery on historic grounds dating to the late 1800s and learn how it was restored from decades of abandonment into a modern bourbon destination. Tour early 20th-century equipment, modern updates, and the Sunken Garden, then conclude with a guided tasting of Castle & Key spirits. Some areas may present mobility challenges.

**9:30 AM – 3:00 PM** *(includes travel time)*

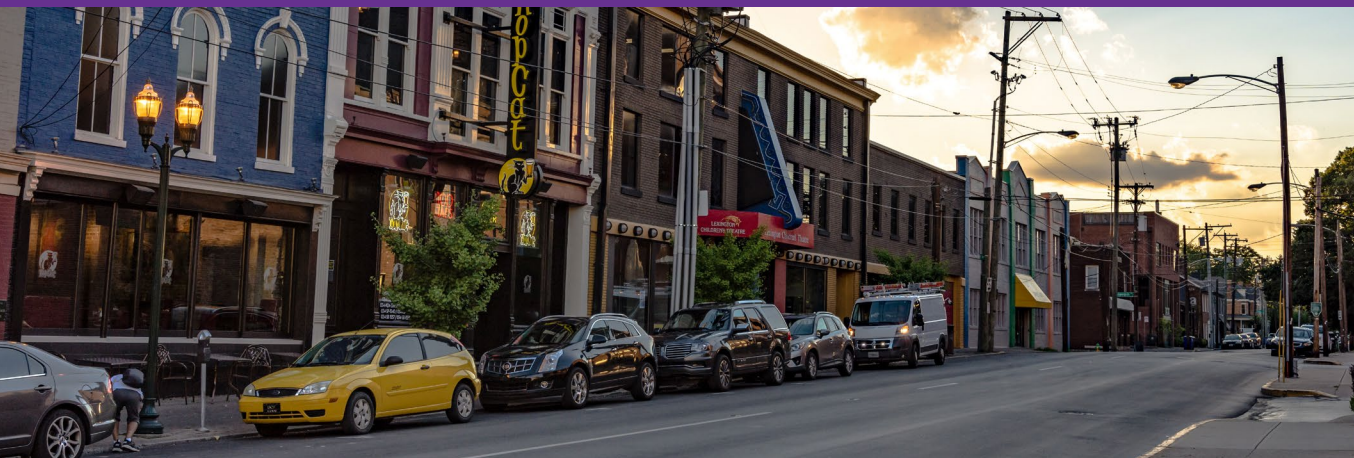
## **Mega Cavern Underground Glow Zip Line Experience**

See description listed at 7:30 AM.

**10:15 AM – 12:45 PM** *(includes travel time)*

## **Old Friends Thoroughbred Sanctuary Tour**

Visit Old Friends, a sanctuary for retired Thoroughbreds, including Kentucky Derby winners, and get up close on a scenic walking tour through the farm's paddocks. Covering 1.25 miles of hilly terrain, guests can feed the horses, learn their stories, and enjoy hands-on interactions. The walk is best suited for those comfortable on uneven ground.



**10:45 AM – 12:10 PM** (includes travel time)

### **Downtown Lexington Self-Guided History Walking Tour**

Discover the rich history of Downtown Lexington on a self-guided walking tour that spans 1.1 miles of the city's most iconic landmarks. Follow an engaging audio guide with music between stops, bringing stories of the past to life and allowing guests to explore at their own pace for a truly immersive and memorable historic experience.

**10:00 AM – 3:30 PM** (includes travel time)

### **Mega Cavern Underground Glow Zip Line Experience**

See description listed at 9:00 AM.

**11:00 AM – 2:30 PM** (includes travel time)

### **Castle & Key Distillery Guided Tour and Tasting**

See description listed at 11:00 AM.

**11:00 AM – 2:15 PM** (includes travel time)

### **Woodford Reserve Distillery Tour and Tasting**

Explore the birthplace of fine bourbon at Woodford Reserve Distillery, a National Historic Landmark since 1812. Discover Kentucky's bourbon heritage and enjoy a guided tasting that brings over two centuries of craft and tradition to life.

**11:15 AM – 2:30 PM** (includes travel time)

### **Buffalo Trace Distillery Tour and Tasting**

Discover the Trace invites you to experience Buffalo Trace Distillery in a whole new way. Enjoy your own crafted cocktail after a hands-on cocktail demonstration, then journey through our distillery to uncover the craftsmanship and history that define our bourbons. Conclude with a blind

tasting of our signature whiskeys, focusing on flavor over labels. It's your chance to truly discover what makes Buffalo Trace—and your bourbon palate—unique.

**12:00 PM – 3:30 PM** (includes travel time)

### **Buffalo Trace Distillery Tour and Tasting**

See description listed at 11:15 AM.

**12:15 PM – 2:30 PM** (includes travel time)

### **Taylor Made Thoroughbred Farm Experience**

Explore Taylor Made Farm, a family-owned Thoroughbred operation spanning nearly 1,100 acres of rolling Kentucky hills. See 10 stallions, including world-leading Not This Time, as well as Kentucky Oaks and Breeders' Cup winners. Learn how Taylor Made has shaped North American racing, selling more than 135 Grade 1 winners, including American Pharoah, Havre de Grace, and Songbird.

**1:15 PM – 4:45 PM** (includes travel time)

### **Downtown Lexington Food & History Tour**

Step into the stories that shaped Lexington on this guided walking tour. Explore historic streets, tucked-away corners, and iconic landmarks while discovering the city's rich past and vibrant present. Along the way, savor four thoughtfully timed food plates at beloved downtown restaurants. The tour covers about one mile of walking.

**1:30 PM – 3:30 PM**

### **Connor Query Art Experience**

Discover the work of Lexington-based visual artist Connor Query, whose passion for painting and graphic design began at a young age. Since 2013, she has grown her business by blending custom prints, painting, and graphic design to create accessible, hands-on art experiences. In this guided session, participants will receive step-by-step

instruction to create a 9-by-12-inch painting inspired by a Kentucky horse farm at sunset, leaving with a finished piece and new creative skills.

**1:30 PM – 3:30 PM** (includes travel time)

### **Spendthrift Farm Experience**

Explore more than 1,200 acres at Spendthrift Farm, home to multiple Kentucky Derby and Breeders' Cup winners. Tour the farm and discover the history and culture of Thoroughbred breeding. Visit the B. Wayne Hughes Visitor Center to see trophies, artifacts, and racing memorabilia that highlight the farm's celebrated legacy.

**1:00 PM – 4:30 PM** (includes travel time)

### **Castle & Key Distillery Guided Tour and Tasting**

See description listed at 10:00 AM.

**1:00 PM – 5:45 PM** (includes travel time)

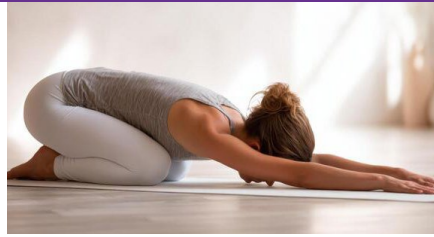
### **Fun Float on Elkhorn Creek**

See description listed at 8:00 AM.

**2:15 PM – 3:20 PM** (includes travel time)

### **Ashland Estate Tour: Home of Henry Clay**

Step inside Ashland, the 19th-century National Historic Landmark and home of statesman Henry Clay. Explore both floors, view authentic artifacts and furnishings, and learn about Clay's public life, his careers as attorney and farmer, and his family. Discover the complex social and economic issues of his time, including slavery, and see how his descendants preserved Ashland for generations.



# monday

07.13.2026



**8:00 AM – 5:00 PM**

## Guest Lounge

The Guest Lounge is open daily and provides a relaxing spot to grab refreshments and take a load off.

**8:00 AM – 10:00 AM** *(includes travel time)*

## Keeneland Morning Works Tour

Experience morning training at this historic racetrack and learn about the storied past of Keeneland Racecourse and the process of training and racing Thoroughbreds. Best for guests who want to learn more about Keeneland and Thoroughbred horse racing, suited for newcomers, racing enthusiasts, and anyone in between! You will be outside walking & standing throughout the tour.

**8:15 AM – 9:45 AM** *(includes travel time)*

## Restorative Hot Yoga

Recharge with an invigorating hot yoga class in a supportive, judgment-free environment at Creative Yoga Studio, which welcomes beginners and seasoned yogis alike. Stretch, breathe, and leave feeling energized.

**8:15 AM – 12:30 PM** *(includes travel time)*

## Raven Run Nature Sanctuary Hike

Explore 734 acres of trails, meadows, woodlands, and streams at this sanctuary just outside Lexington. The park

borders the Kentucky River, offers ten miles of hiking paths, and features historic remnants from early 19th-century settlers; trails are narrow in some areas.

**8:15 AM – 11:30 AM** *(includes travel time)*

## Buffalo Trace Distillery Tour and Tasting

Discover the Trace invites you to experience Buffalo Trace Distillery in a whole new way. Enjoy your own crafted cocktail after a hands-on cocktail demonstration, then journey through our distillery to uncover the craftsmanship and history that define our bourbons. Conclude with a blind tasting of our signature whiskeys, focusing on flavor over labels. It's your chance to truly discover what makes Buffalo Trace—and your bourbon palate—unique.

**8:30 AM – 11:30 AM** *(includes travel time)*

## Pickleball at North YMCA

Experience pickleball, an easy-to-learn sport that offers movement, strategy, and friendly competition. Morning play takes place at the North YMCA, with flexibility to move indoors as weather requires.

**9:45 AM – 11:05 AM** *(includes travel time)*

## Lexington History Museum Guided Tour

Step into Lexington's story on a one-hour guided tour through three distinct exhibit areas, highlighting the city's 250-year history and key figures who shaped it. After the tour, enjoy time to explore the rotating gallery and uncover additional stories at your own pace.

**9:15 AM – 11:45 AM** *(includes travel time)*

## Old Friends Thoroughbred Sanctuary Tour

Visit Old Friends, a sanctuary for retired Thoroughbreds, including Kentucky Derby winners, and get up close on a scenic walking tour through the farm's paddocks. Covering 1.25 miles of hilly terrain, guests can feed the horses, learn their stories, and enjoy hands-on interactions. The walk is best suited for those comfortable on uneven ground.

**10:00 AM – 1:00 PM** *(includes travel time)*

## Spy Coast Farm Performance Horse Tour

Explore Spy Coast Farm, a leading facility for performance horses, and see breeding, training, competition, and rehabilitation programs in action. Guests will learn how the farm combines expert care, advanced training, and education to support horses and riders alike, providing a behind-the-scenes look at one of Kentucky's most innovative equine operations.

**10:15 AM – 12:15 PM** *(includes travel time)*

## Walk Across Kentucky Botanical Trail

Discover Kentucky's landscapes on the two-mile "Walk Across Kentucky" path, featuring over 80 acres of native plants from all seven physiographic regions. Wander through wetlands, prairies, savannahs, and woodlands, see more than 2,500 trees and shrubs, and experience a living showcase of the state's unique botanical diversity and conservation efforts.

**10:30 AM – 1:00 PM** *(includes travel time)*

## UK Food Connection Cooking Class

Experience hands-on culinary instruction with Chefs T Squared, Tanya and Tem at the University of Kentucky. Learn knife skills, cooking techniques and the flavors of Kentucky's local food system in a lively, interactive kitchen. The class involves standing for much of the session, and guests should wear closed-toe, non-skid shoes with long hair tied back for safety.

**11:00 AM – 4:00 PM** *(includes travel time)*

## Midway Shopping Excursion

Enjoy a full day of shopping in downtown Historic Midway, Kentucky. Explore local boutiques, unique shops, and charming streets for a relaxed and memorable shopping experience.



**11:00 AM – 1:30 PM** (includes travel time)

### **Jonabell Farm Stallion Experience**

Step onto the 800-acre Jonabell Farm and explore the stallion side of this world-renowned Thoroughbred operation. Learn about the history of the farm and the global racing industry while meeting some of the sport's most celebrated stallions that call Jonabell home.

**11:00 AM – 1:30 PM** (includes travel time)

### **Mill Ridge Farm Thoroughbred Caravan Tour**

Step into the world of Thoroughbreds at Mill Ridge Farm and experience the Headley family's legendary legacy. Start with a walking tour in the breeding shed, then embark on a scenic caravan across the grounds to meet horses of all ages, feed them carrots, and encounter champion stallions including Oscar Performance, Aloha West, and Casa Creed. Outdoor attire and sturdy shoes are recommended.

**11:15 AM – 1:45 PM** (includes travel time)

### **Talon Winery Experience**

Relax among rolling hills and scenic horse farms at Talon Winery, a family-owned Kentucky gem. Savor award-winning wines, enjoy a serene and charming setting, and experience the warm hospitality that makes Talon a cherished destination for locals and visitors alike.

**11:00 AM – 3:00 PM** (includes travel time)

### **Boone Tavern Historic Lunch & Local Shopping**

Dine at historic Boone Tavern, a Berea hotel and restaurant established in 1909, and enjoy Kentucky's best spoonbread in a setting shaped by more than a century of hospitality. Over the years, the inn has welcomed notable guests such as Henry Ford and Eleanor Roosevelt, underscoring its place in Kentucky history. After lunch, explore nearby shopping options for a memorable local experience.

**11:50 AM – 1:10 PM** (includes travel time)

### **Mary Todd Lincoln House History Tour**

Step inside the home of Mary Todd Lincoln for a one-hour guided tour that explores her life, family, and impact on American history. Afterward, browse the museum store,



enjoy the historic garden, and continue the experience with a self-guided walking tour of downtown Lexington.

**12:00 PM – 5:00 PM** (includes travel time)

### **Fun Float on Elkhorn Creek**

Glide through a secluded, wildlife-rich section of Elkhorn Creek on the Fun Float, a scenic canoe and kayak adventure perfect for nature lovers and outdoor enthusiasts. Drift past rock-bottom riffles, calm pools, and wooded valleys while enjoying the beauty of Kentucky's waterways. Guests should bring clothing that can get wet, a change of clothes, sunscreen, hats, and sunglasses. A signed waiver is required for all participants.

**12:00 PM – 4:30 PM** (includes travel time)

### **Raven Run Nature Sanctuary Hike**

See description listed at 9:00 AM.

**12:00 PM – 3:30 PM** (includes travel time)

### **Buffalo Trace Distillery Tour and Tasting**

See description listed at 8:15 AM.

**1:00 PM – 3:30 PM** (includes travel time)

### **Mill Ridge Farm Thoroughbred Caravan Tour**

See description listed at 11:30 AM.

**1:30 PM – 4:00 PM** (includes travel time)

### **UK Food Connection Cooking Class**

See description listed at 11:00 AM.

**1:15 PM – 3:45 PM** (includes travel time)

### **Walk Across Kentucky Botanical Trail**

See description listed at 10:30 AM.

**1:40 PM – 3:05 PM** (includes travel time)

### **Lexington History Museum Guided Tour**

See description listed at 10:00 AM.

**1:00 PM – 4:15 PM** (includes travel time)

### **Woodford Reserve Distillery Tour and Tasting**

Explore the birthplace of fine bourbon at Woodford Reserve Distillery, a National Historic Landmark since 1812. Discover Kentucky's bourbon heritage and enjoy a guided tasting that brings over two centuries of craft and tradition to life.

**2:15 PM – 4:30 PM** (includes travel time)

### **Equus Run Vineyards & Winery Experience**

Explore nearly 40 acres of vineyards in the heart of Kentucky horse country at Equus Run, just 15 miles from downtown Lexington. Stroll through the vines on a guided or self-guided tour, enjoy a picnic by the creek, and capture picture-perfect moments amid this serene, scenic setting.





# tuesday

07.14.2026

**8:00 AM – 5:00 PM**

## Guest Lounge

The Guest Lounge is open daily and provides a relaxing spot to grab refreshments and take a load off.

**8:00 AM – 10:00 AM** *(includes travel time)*

## Keeneland Morning Works Tour

Experience morning training at this historic racetrack and learn about the storied past of Keeneland Racecourse and the process of training and racing Thoroughbreds. Best for guests who want to learn more about Keeneland and Thoroughbred horse racing, suited for newcomers, racing enthusiasts, and anyone in between! You will be outside walking & standing throughout the tour.

**8:45 AM – 10:15 AM** *(includes travel time)*

## Downtown Lexington Public Art Self-Guided History Walking Tour

Discover the rich history of Downtown Lexington on a self-guided walking tour that spans 1.1 miles of the city's most iconic landmarks. Follow an engaging audio guide with



music between stops, bringing stories of the past to life and allowing guests to explore at their own pace for a truly immersive and memorable historic experience.

**8:30 AM – 11:30 AM** *(includes travel time)*

## Pickleball at North YMCA

Experience pickleball, an easy-to-learn sport that offers movement, strategy, and friendly competition. Morning play takes place at the North YMCA, with flexibility to move indoors as weather requires.

**9:00 AM – 2:00 PM** *(includes travel time)*

## Midway Shopping Trip

Stroll through Downtown Historic Midway, KY, and discover a variety of charming shops, boutiques, and local treasures. Enjoy a relaxed day of shopping and browsing in a picturesque small-town setting.

**9:00 AM – 12:15 PM** *(includes travel time)*

## Woodford Reserve Distillery Tour and Tasting

Explore the birthplace of fine bourbon at Woodford Reserve Distillery, a National Historic Landmark since 1812. Discover Kentucky's bourbon heritage and enjoy a guided tasting that brings over two centuries of craft and tradition to life.

**10:00 AM – 12:15 PM** *(includes travel time)*

## Double Dan Horsemanship Farm Visit

Go behind the scenes at Double Dan Horsemanship, a working farm known for training horses for film, television, print ads, and live performances. Participants learn how professional trainers prepare horses for on-camera work and see firsthand how skill, patience, and trust shape these highly trained animals. This guided visit offers a unique look at an industry rarely seen up close.

**9:50 AM – 11:10 AM** *(includes travel time)*

## Mary Todd Lincoln House History Tour

Step inside the home of Mary Todd Lincoln for a one-hour guided tour that explores her life, family, and impact on American history. Afterward, browse the museum store, enjoy the historic garden, and continue the experience with a self-guided walking tour of downtown Lexington.

**10:00 AM – 1:30 PM** *(includes travel time)*

## Buffalo Trace Distillery Tour and Tasting

Discover the Trace offers a new way to experience Buffalo Trace Distillery. Enjoy a hands-on cocktail demonstration and crafted drink, tour the distillery's history and craftsmanship, and finish with a blind tasting of signature whiskeys focused on flavor—not labels.

**10:45 AM – 2:10 PM** *(includes travel time)*

## Downtown Lexington Food & History Tour

Step into the stories that shaped Lexington on this guided walking tour. Explore historic streets, tucked-away corners, and iconic landmarks while discovering the city's rich past and vibrant present. Along the way, savor four thoughtfully timed food plates at beloved downtown restaurants. The tour covers about one mile of walking.

**10:15 AM – 12:45 PM** *(includes travel time)*

## Old Friends Thoroughbred Sanctuary Tour

Visit Old Friends, a sanctuary for retired Thoroughbreds, including Kentucky Derby winners, and get up close on a scenic walking tour through the farm's paddocks. Covering 1.25 miles of hilly terrain, guests can feed the horses, learn their stories, and enjoy hands-on interactions. The walk is best suited for those comfortable on uneven ground.

**10:30 AM – 1:00 PM** *(includes travel time)*

### **UK Food Connection Cooking Class**

Experience hands-on culinary instruction with Chefs T Squared, Tanya and Tem at the University of Kentucky. Learn knife skills, cooking techniques and the flavors of Kentucky's local food system in a lively, interactive kitchen. The class involves standing for much of the session, and guests should wear closed-toe, non-skid shoes with long hair tied back for safety.

**11:00 AM – 4:45 PM** *(multiple sessions during the day)*

### **J. Martin Hat Co. Design Experience**

Design your own custom equestrian-style wool hat with guidance from J. Martin Hat Co.'s expert designers. Bring your vision to life in a hands-on, creative experience that combines style and craftsmanship. With experience at prestigious events like the Keeneland Sales and the Kentucky Three-Day, the team ensures a professional, memorable experience you'll cherish.

**11:15 AM – 1:20 PM** *(includes travel time)*

### **Ashland Estate Tour: Home of Henry Clay**

Step inside Ashland, the 19th-century National Historic Landmark and home of statesman Henry Clay. Explore both floors, view authentic artifacts and furnishings, and learn about Clay's public life, his careers as attorney and farmer, and his family. Discover the complex social and economic issues of his time, including slavery, and see how his descendants preserved Ashland for generations.

**11:00 AM – 1:30 PM** *(includes travel time)*

### **Stonestreet Farm**

The guiding focus of Stonestreet's breeding program is to produce Thoroughbreds with strength, stamina, and class.

The farm's long-term business model includes welcoming its retired fillies into its broodmare band and supporting its colts at stud. Our broodmare band produces an average of 80 foals a year and each represents an expression of our pursuit to cultivate champions. Special attention and care go into the breeding and nurturing of each foal to ensure that they have the best chance of success at racing's highest levels. Stonestreet is also committed to providing the horses that do not enter the breeding operation every opportunity to succeed in a second career.

**11:20 AM – 12:40 PM** *(includes travel time)*

### **Mary Todd Lincoln House History Tour**

Step inside the home of Mary Todd Lincoln for a one-hour guided tour that explores her life, family, and impact on American history. Afterward, browse the museum store,

enjoy the historic garden, and continue the experience with a self-guided walking tour of downtown Lexington.

**9:30 AM – 1:45 PM** *(includes travel time)*

### **Red River Gorge Underground Kayak Adventure**

Embark on an unforgettable underground kayak journey through a century-old flooded limestone mine in Kentucky's Red River Gorge. Navigate historic tunnels, marvel at ancient fossils and minerals, and spot rainbow trout and other aquatic life in crystal-clear waters. With a cool 50-55 degree environment year-round, this guided adventure combines history, geology, and hands-on exploration for a truly one-of-a-kind experience. Helmets, headlamps, and safety instruction are provided.

**10:30 AM – 2:45 PM** *(includes travel time)*

### **Red River Gorge Underground Kayak Adventure**

See description listed at 9:30 AM.

**11:15 AM – 1:45 PM** *(includes travel time)*

### **Old State Capitol Tour**

Step into Kentucky's political past at the Old State Capitol in Frankfort, a National Historic Landmark that served as the state's seat of government from 1830 to 1910. Explore restored chambers where Henry Clay and other lawmakers debated pivotal issues, admire the curved, self-supporting stone stairway and Greek Revival architecture, and uncover stories of intrigue, elections, and daily life in 19th-century Kentucky. This guided tour offers a captivating look at the people, politics, and design that shaped the state.

**11:00 AM – 3:00 PM** *(includes travel time)*

### **Boone Tavern Historic Lunch & Local Shopping**

Dine at historic Boone Tavern, a Berea hotel and restaurant established in 1909, and enjoy Kentucky's best spoonbread in a setting shaped by more than a century of hospitality. Over the years, the inn has welcomed notable guests such as Henry Ford and Eleanor Roosevelt, underscoring its place in Kentucky history. After lunch, explore nearby shopping options for a memorable local experience.

**11:30 AM – 3:45 PM** *(includes travel time)*

### **Red River Gorge Underground Kayak Adventure**

See description listed at 11:00 AM.

**12:45 PM – 4:10 PM** *(includes travel time)*

### **Downtown Lexington Food & History Tour**

See description listed at 10:45 AM.

**12:00 PM – 3:30 PM** *(includes travel time)*

### **Buffalo Trace Distillery Tour and Tasting**

See description listed at 8:15 AM.

**1:30 PM – 4:00 PM** *(includes travel time)*

### **UK Food Connection Cooking Class**

See description listed at 10:30 AM.

**1:45 PM – 3:05 PM** *(includes travel time)*

### **Lexington History Museum Guided Tour**

Step into Lexington's story on a one-hour guided tour through three distinct exhibit areas, highlighting the city's 250-year history and key figures who shaped it. After the tour, enjoy time to explore the rotating gallery and uncover additional stories at your own pace.

**1:15 PM – 3:45 PM** *(includes travel time)*

### **Talon Winery Experience**

Relax among rolling hills and scenic horse farms at Talon Winery, a family-owned Kentucky gem. Savor award-winning wines, enjoy a serene and charming setting, and experience the warm hospitality that makes Talon a cherished destination for locals and visitors alike.

**1:50 PM – 3:10 PM** *(includes travel time)*

### **Mary Todd Lincoln House History Tour**

Step inside the home of Mary Todd Lincoln for a one-hour guided tour that explores her life, family, and impact on American history. Afterward, browse the museum store, enjoy the historic garden, and continue the experience with a self-guided walking tour of downtown Lexington.

**2:15 PM – 4:20 PM** *(includes travel time)*

### **Ashland Estate Tour: Home of Henry Clay**

Step inside Ashland, the 19th-century National Historic Landmark and home of statesman Henry Clay. Explore both floors, view authentic artifacts and furnishings, and learn about Clay's public life, his careers as attorney and farmer, and his family. Discover the complex social and economic issues of his time, including slavery, and see how his descendants preserved Ashland for generations.

**2:15 PM – 4:30 PM** *(includes travel time)*

### **Equus Run Vineyards & Winery Experience**

Explore nearly 40 acres of vineyards in the heart of Kentucky horse country at Equus Run, just 15 miles from downtown Lexington. Stroll through the vines on a guided or self-guided tour, enjoy a picnic by the creek, and capture picture-perfect moments amid this serene, scenic setting.

