



Government Staff Track

**Creating a Culture of Excellence:
How to Shift, Adapt, and Thrive
in an Ever-Changing Landscape**

One-on-One

Find a partner. Introduce yourself, and discuss:

- What are you most enthused about the SLC?
- What inspires you most in your role?
- What is a current or anticipated challenge in your own work?

MAKING “SURFACE TO SUBSTANCE” CONNECTIONS

1. Have the **courage and curiosity** to connect — especially with those who are new or different.
2. Connect by asking questions that go **“from surface to substance.”**



© 2020 Excellence with Integrity Institute | www.ewii.org

OPTIMAL PERFORMANCE – A SYNERGY OF:





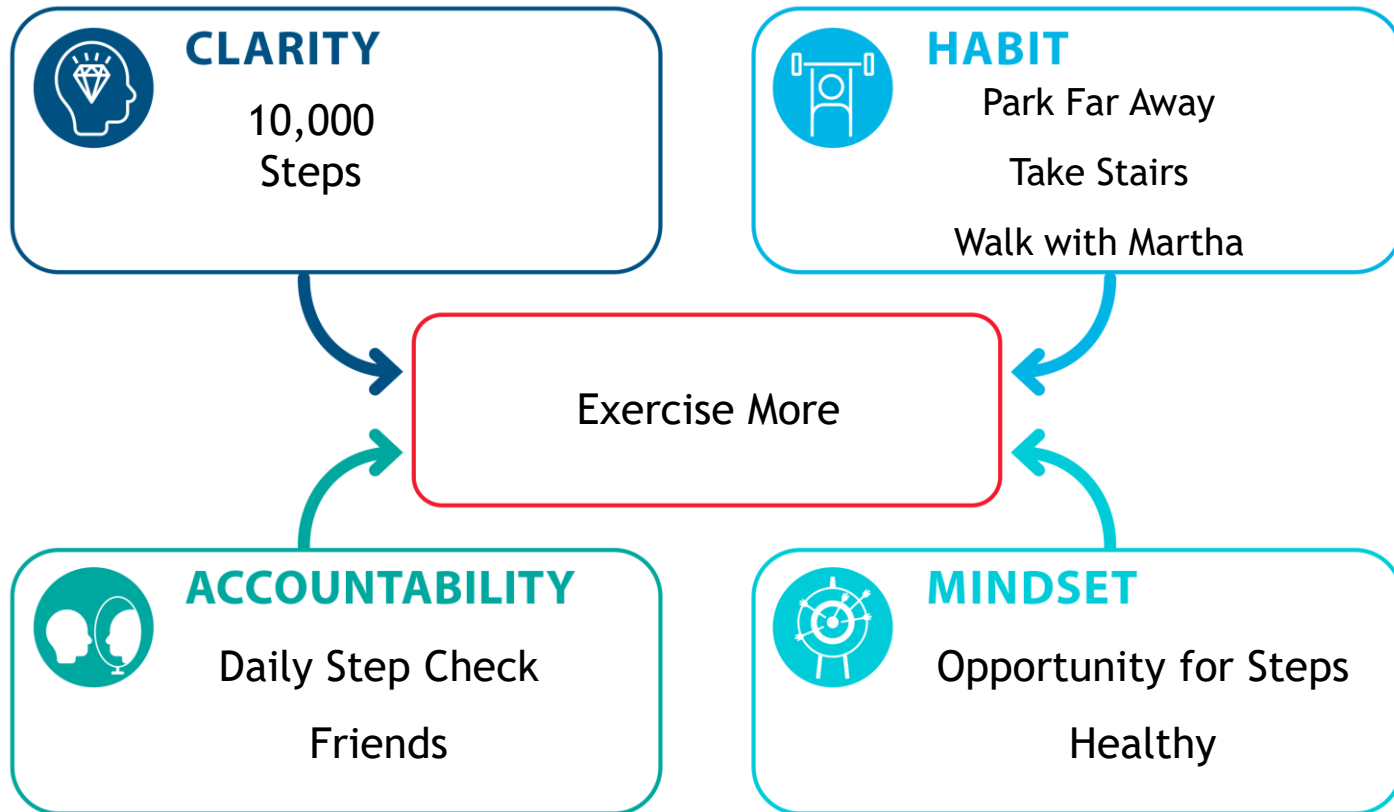
Clarity, Habit, Accountability, Mindset → Performance

LEADERSHIP PRACTICES FOR SHAPING CULTURE



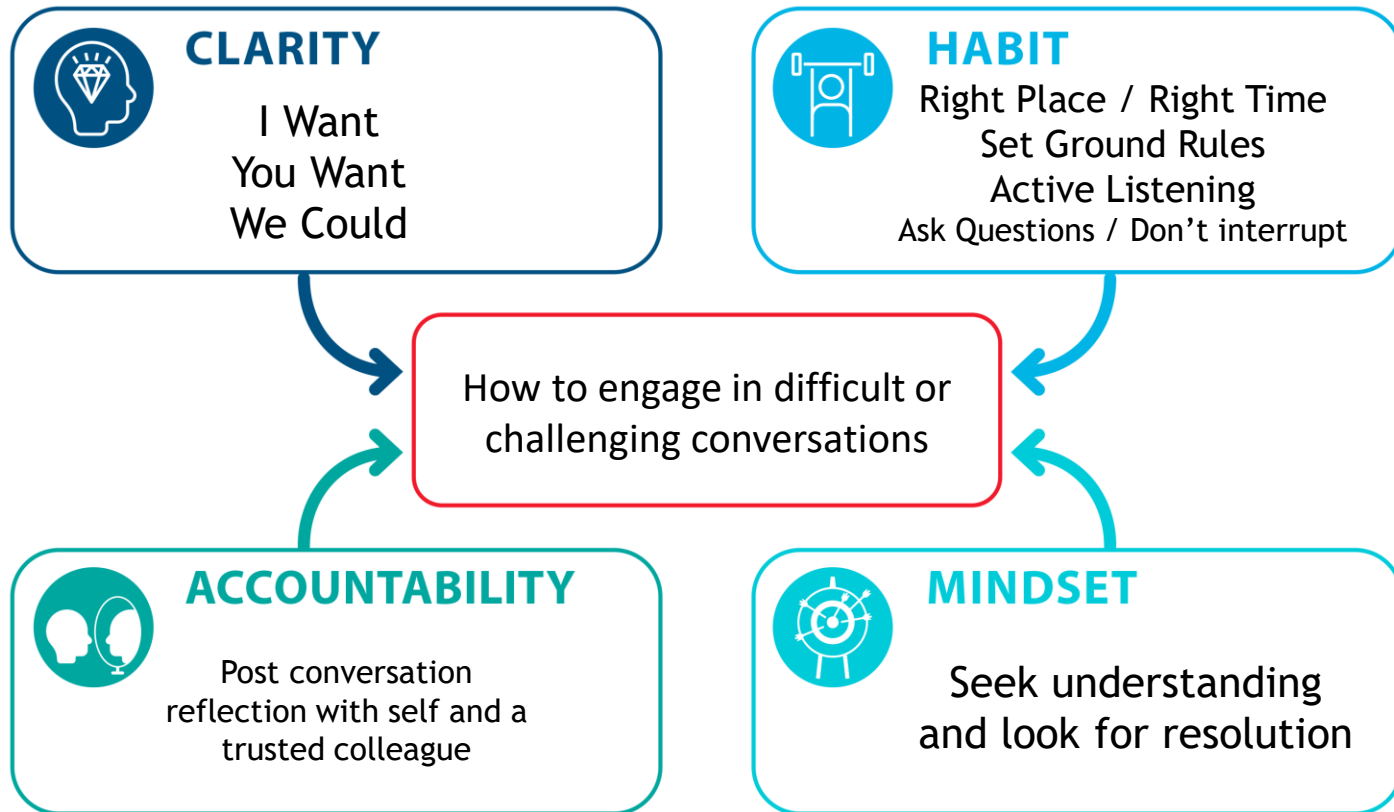


Clarity, Habit, Accountability, Mindset → Performance



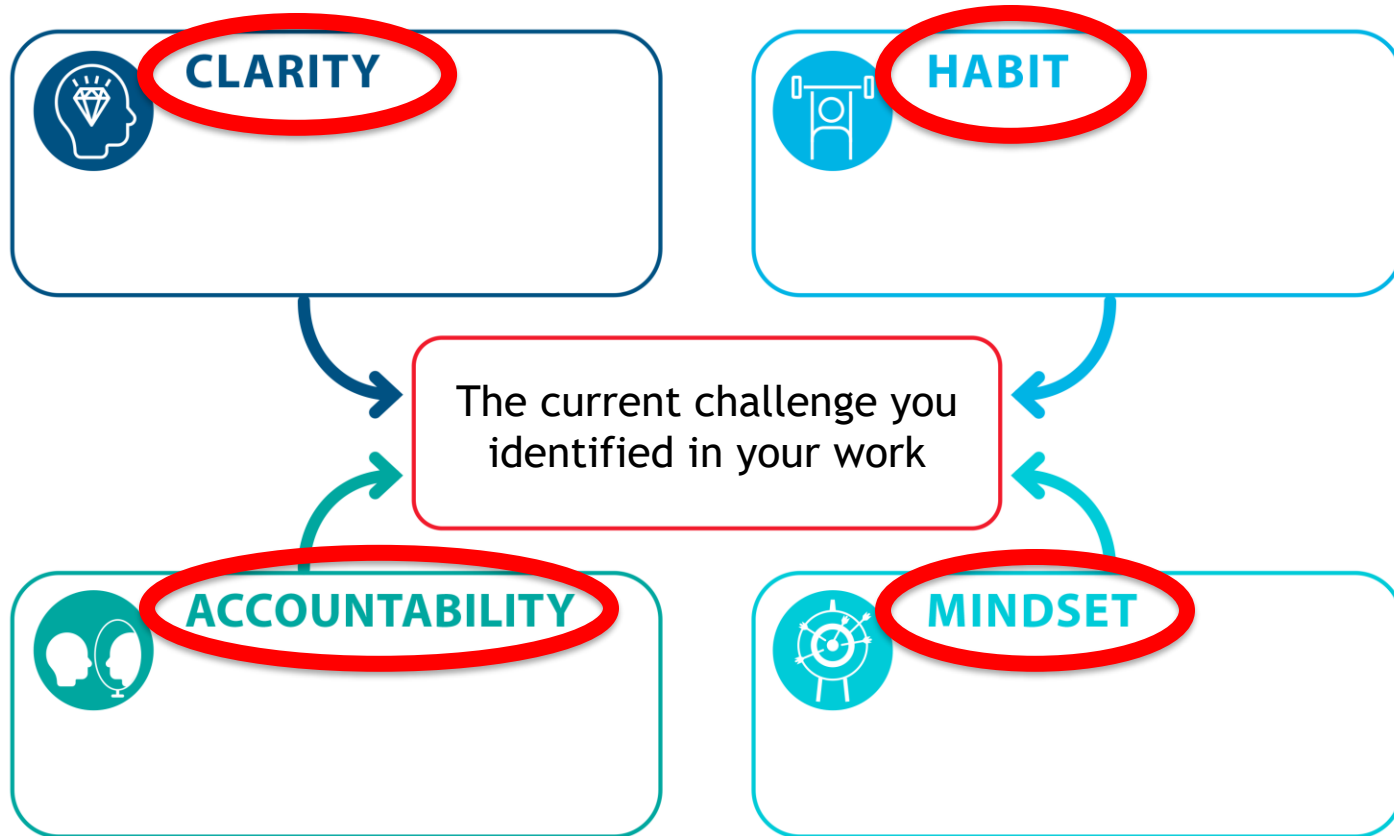


Clarity, Habit, Accountability, Mindset → Performance





Clarity, Habit, Accountability, Mindset → Performance





Government Staff Track

**Creating a Culture of Excellence:
How to Shift, Adapt, and Thrive
in an Ever-Changing Landscape**