



Vogtle

units 3&4 Nuclear Development



Southern Legislative Conference

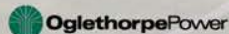
Energy and Environment Committee

Todd Yelverton

Georgia Power Nuclear Development
Commercial Director

Cautionary Note Regarding Forward-Looking Statements

Certain information contained in this presentation is forward-looking information based on current expectations and plans that involve risks and uncertainties. Forward-looking information includes, among other things, statements concerning the cost and schedule of completion of construction of Plant Vogtle Units 3 and 4, job creation, the expected impact of Plant Vogtle Units 3 and 4 on customer rates, and benefits to customers. Georgia Power cautions that there are certain factors that could cause actual results to differ materially from the forward-looking information that has been provided. The reader is cautioned not to put undue reliance on this forward-looking information, which is not a guarantee of future performance and is subject to a number of uncertainties and other factors, many of which are outside the control of Georgia Power; accordingly, there can be no assurance that such suggested results will be realized. The following factors, in addition to those discussed in Georgia Power's Annual Report on Form 10-K for the fiscal year ended December 31, 2013, and subsequent securities filings, could cause actual results to differ materially from management expectations as suggested by such forward-looking information: the impact of recent and future federal and state regulatory changes, as well as changes in application of existing laws and regulations; current and future litigation, regulatory investigations, proceedings, or inquiries; available sources and costs of fuels; state and federal rate regulations and the impact of pending and future rate cases and negotiations, including rate actions relating to fuel and other cost recovery mechanisms; ability to control costs and avoid cost overruns during the development and construction of facilities, which includes the development and construction of facilities with designs that have not been finalized or previously constructed, including risks that have caused and may continue to cause cost increases and/or schedule extensions; ability to construct facilities in accordance with the requirements of permits and licenses and to satisfy any operational and environmental performance standards, including the requirements of tax credits and other incentives; advances in technology; regulatory approvals and actions related to Plant Vogtle Units 3 and 4, including Georgia Public Service Commission approvals and Nuclear Regulatory Commission actions; and the ability of counterparties of Georgia Power to make payments as and when due and to perform as required. Georgia Power expressly disclaims any obligation to update any forward-looking information.



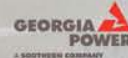


438 Operating Units Worldwide
~14% of Energy

US Nuclear Plants

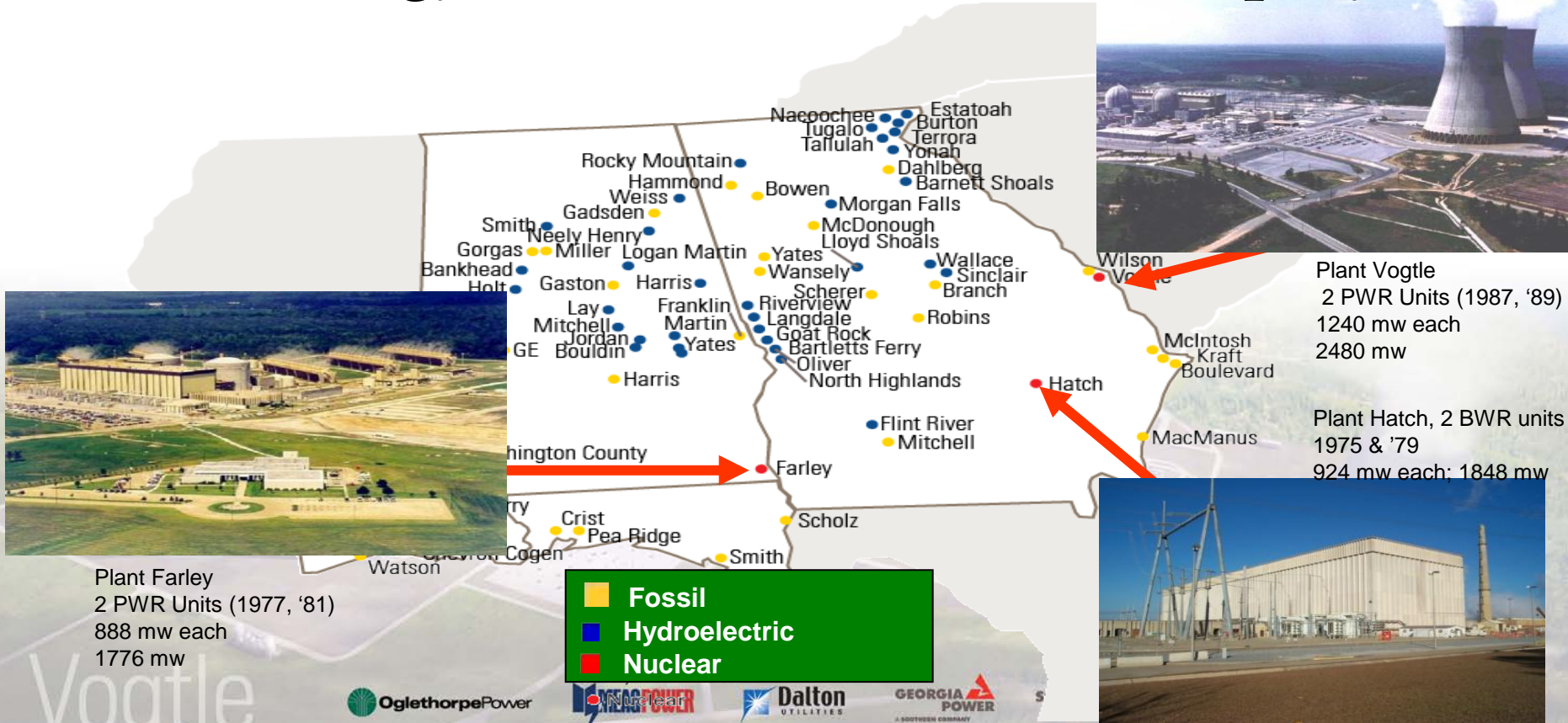


Existing Plants
 104 operating reactors
 64 plants



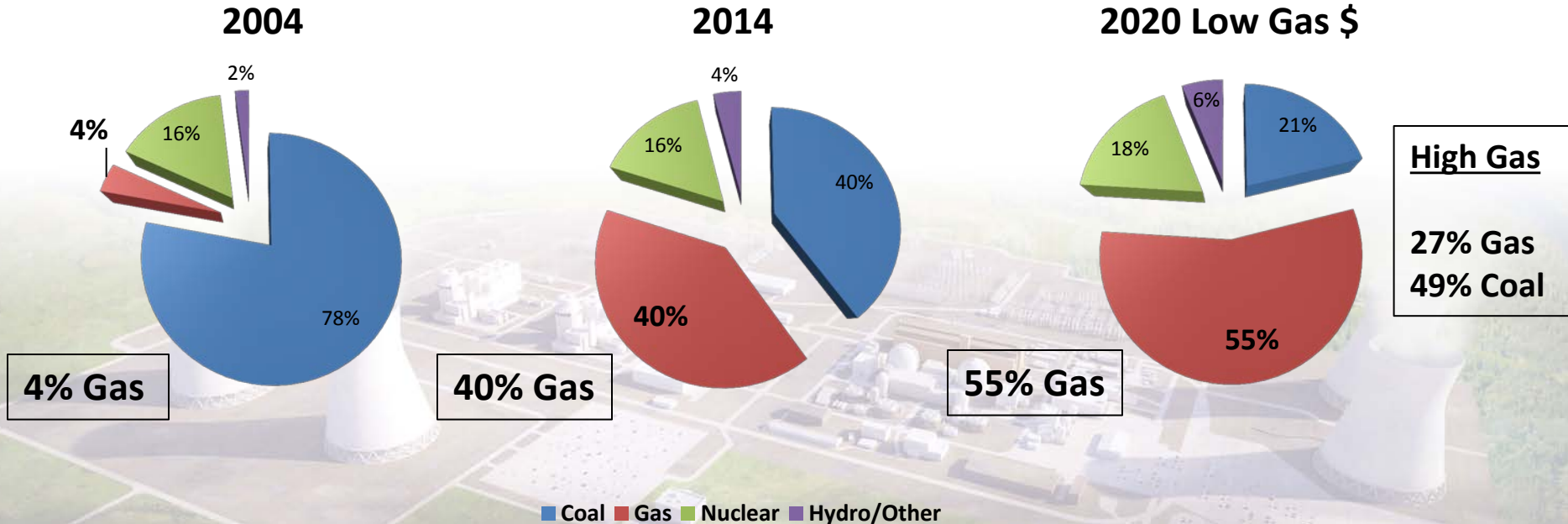
units 3&4 Nuclear Development

Nuclear Energy Facilities at Southern Company



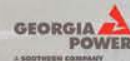
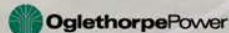
Vogtle units 3&4 Nuclear Development

Southern Company Generation Mix



Vogtle

units 3&4 Nuclear Development



Power Production Equivalents



334 pellets per rod

264 rods per assembly

157 assemblies



Source: Nuclear Energy Institute

1 uranium fuel pellet =



1 ton of coal



17,000 cubic feet
of natural gas



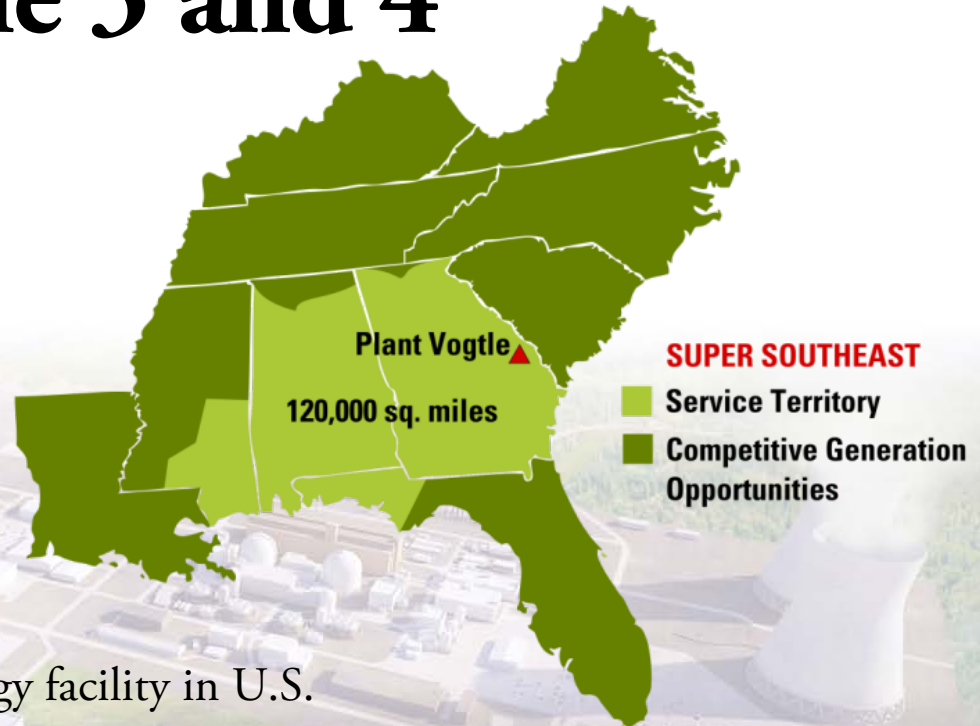
5,000 pounds of wood



149 gallons of oil

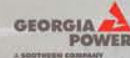
Vogtle 3 and 4

- **Two units:** 1,117 MW each
- **Technology:** Westinghouse AP1000
- **Location:** Waynesboro, Ga.
- **Expected in-service dates:**
 - Unit 3: 2019
 - Unit 4: 2020
- **When completed, Vogtle 1-4:**
 - Will be the largest nuclear energy facility in U.S.
 - Expected to power 1+ million homes and businesses



Vogtle

units 3&4 Nuclear Development





Co-Owners



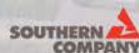
A SOUTHERN COMPANY



Dalton
UTILITIES

Vogtle

units 3&4 Nuclear Development





Vogtle 3&4 Key Messages

- Safety will always come first. We remain focused on completing Vogtle 3 and 4 with **safety and quality** as top priorities. We will not compromise.
- This project is projected to have less of an impact on customer rates than originally anticipated.
 - **Total of 6-8 percent compared to 12 percent at certification**
- **\$10 billion capital** investment in the state of Georgia.
- Vogtle 3&4 the largest job-producing project in the state, currently employing **5,500 people** and creating **800 permanent jobs** when the plant begins operating.
- Once complete, the Vogtle site will be the first 4 unit site in the U.S. that will produce enough safe, reliable, affordable electricity to power **1,000,000 Georgia homes and businesses.**

Vogtle

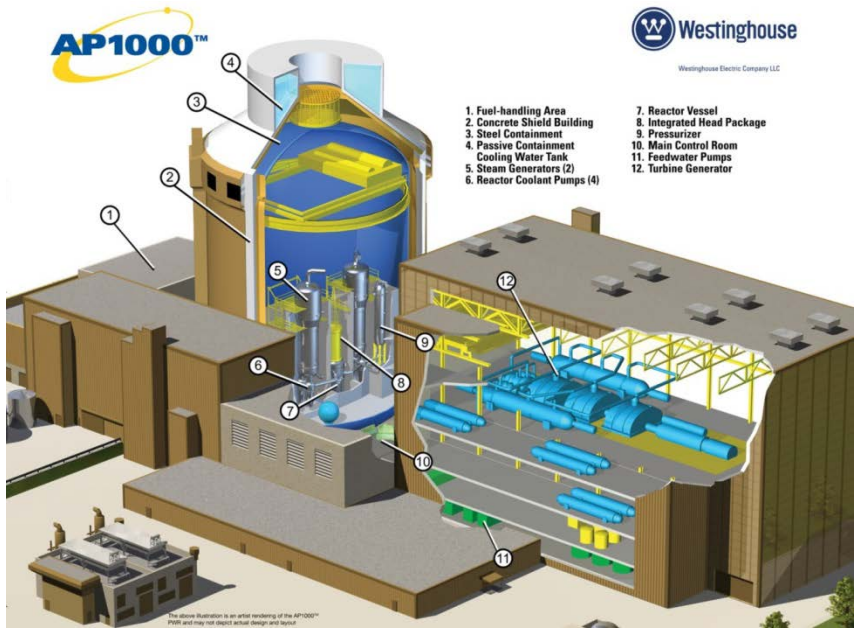
units 3&4 Nuclear Development



Vogtle 3&4 - Construction, July 1, 2015



Vogtle Unit 3

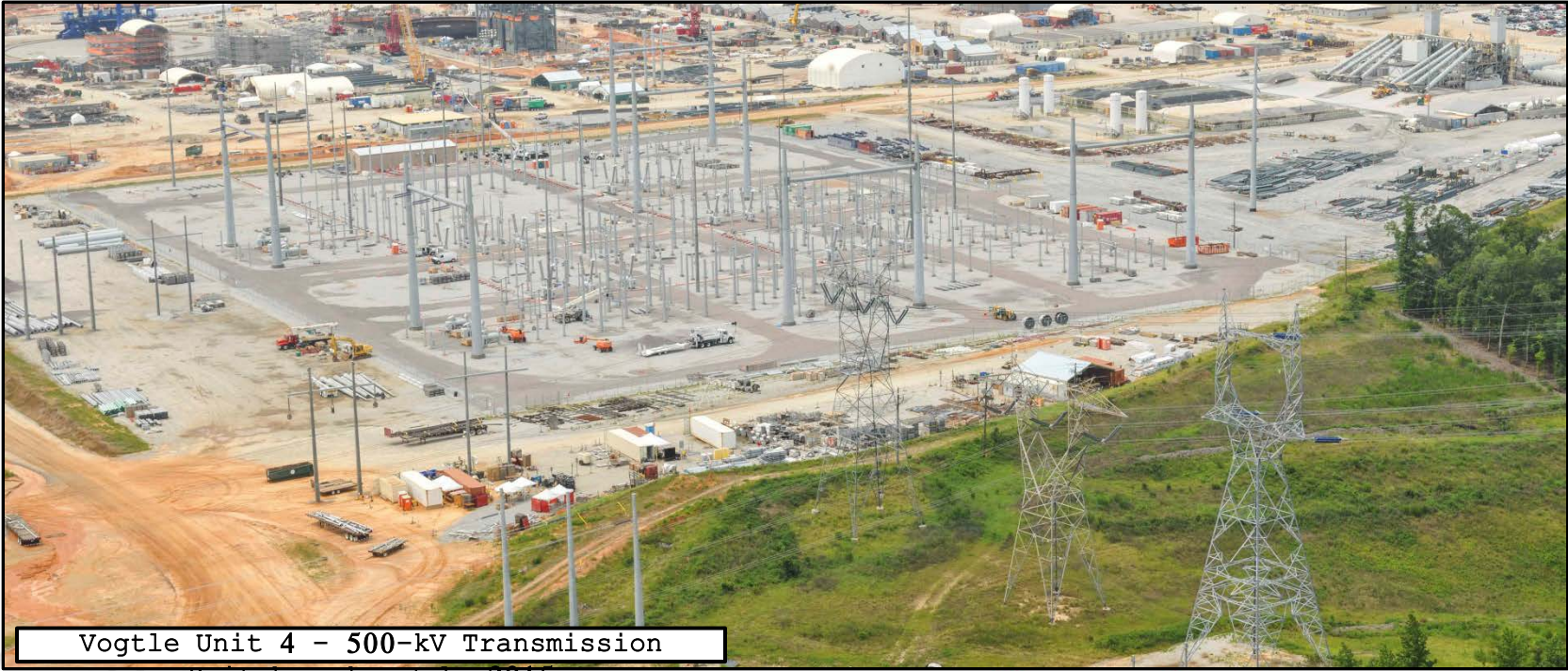


Vogtle

units 3&4 Nuclear Development



Vogtle Unit 4 - 500-kV Transmission Switchyard



Vogtle Unit 4 - 500-kV Transmission

Switchyard- July 2015

Vogtle

units 3&4 Nuclear Development



Major International Component Manufacturing Locations



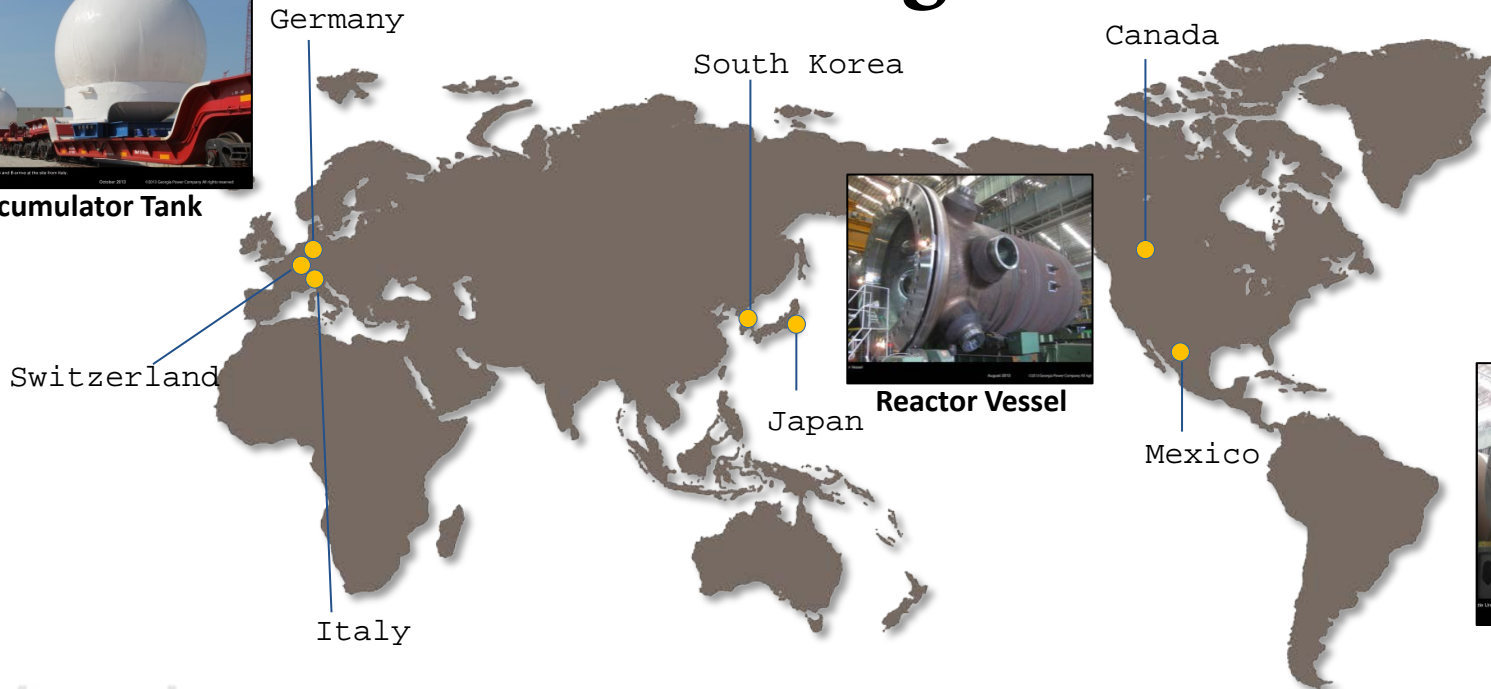
Accumulator Tank



Reactor Vessel



Steam Generator

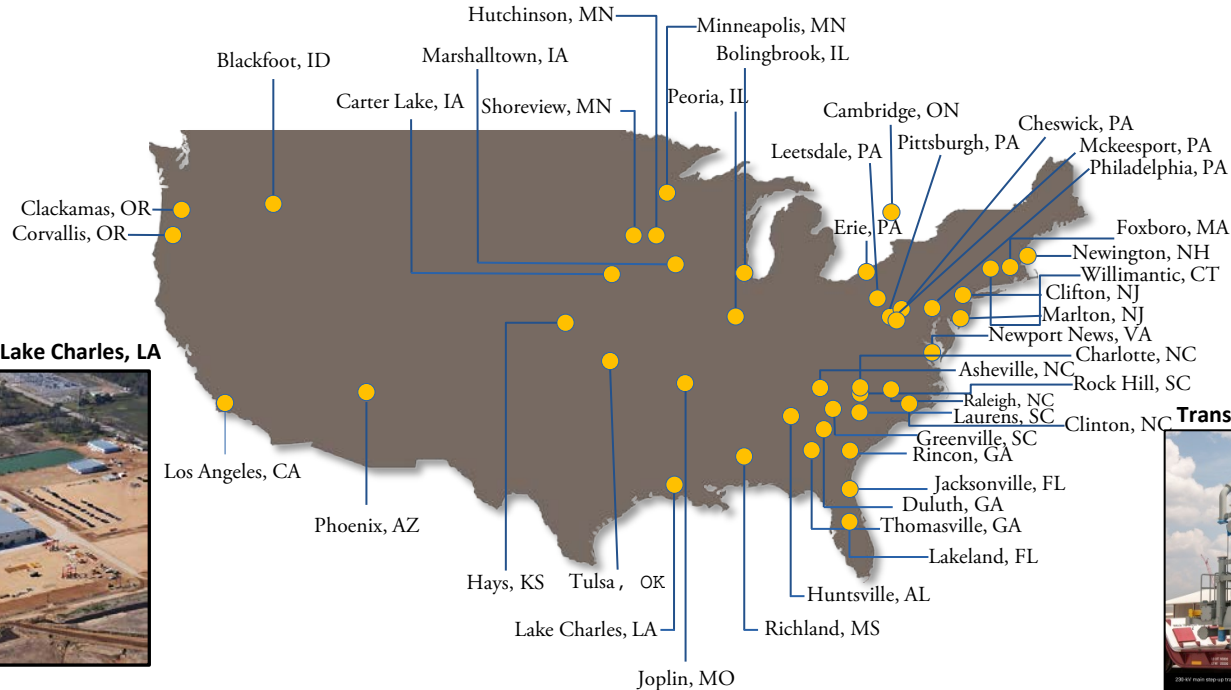


Vogtle

units 3&4 Nuclear Development



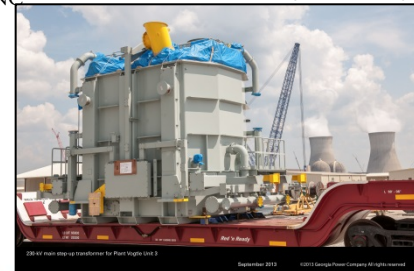
Major Domestic Component Manufacturing Locations



Structural Modules from CBI - Lake Charles, LA



Transformers from Efasec (GA and SC)



Vogtle

units 3&4 Nuclear Development



Vogtle Unit 3 CA20 Module



Vogtle

units 3&4 Nuclear Development



Vogtle Unit 4 Pressurizer



Vogtle

units 3&4 Nuclear Development



Vogtle Unit 3 Steam Generator



Vogtle Unit Steam Generator A – June 2015

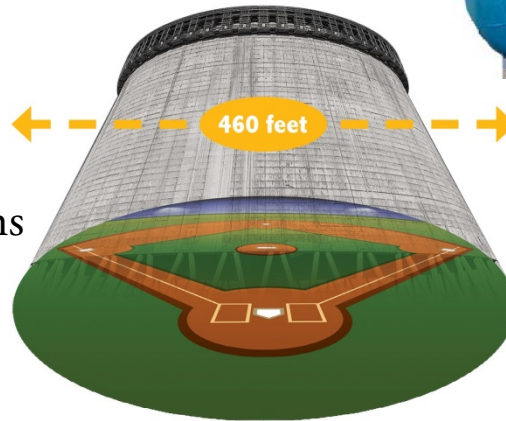
Vogtle

units 3&4 Nuclear Development



Vogtle 3&4 Fun Facts

- Steam Generators: 1.3 million pounds, heaviest lift ever for the Port of Savannah
 - Each unit will have two steam generators
- Vogtle 1-4 footprint: 3,169 acres
 - Four times larger than New York City's Central Park
- The Vogtle Unit 3 cooling tower contains five times more concrete than the Statue of Liberty and stands 60 stories high, taller than any building in 26 states.



vogtle

units 3&4 Nuclear Development



Vogle 3&4 Concrete



Vogle

units 3&4 Nuclear Development





Keeping Electricity Prices Below National Average

- DOE Loan Guarantee - \$8.3B
 - High-quality, low-risk investment partner
 - GPC \$300M benefits pass to customers
- Construction Work in Progress (CWIP) - \$550M
- Production Tax Credits (PTC) - \$800M
- Positive relationship with Public Service Commission

Vogtle

units 3&4 Nuclear Development





Vogtle

units 3&4 Nuclear Development



Questions



Vogtle

units 3&4 Nuclear Development



Headlines

“This is a trailblazing experiment – It requires cooperation from the government at every step!”

What we have been saying...

Vogtle

units 3&4 Nuclear Development



Sunday, November 21, 1954

- **Atlanta Journal Constitution**
- **Consolidated Edison**
- *New York Utility Company Works on Atom Power Plant*

Vogtle

units 3&4 Nuclear Development

